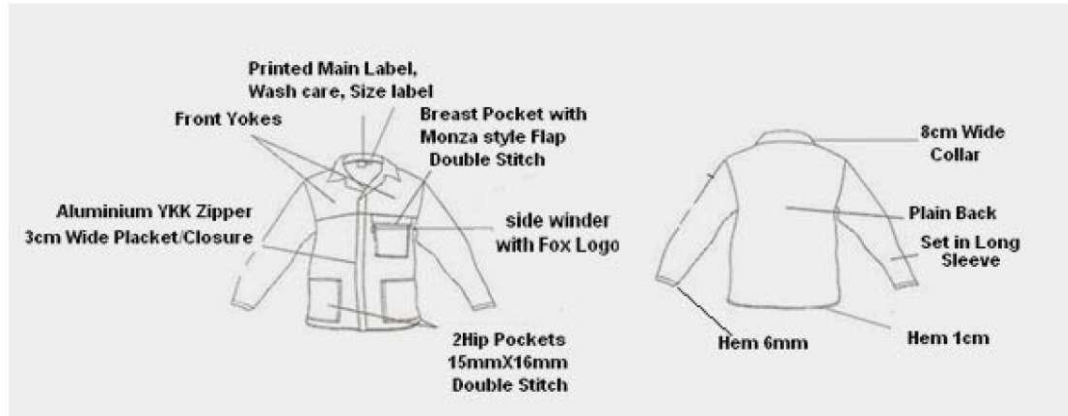


*Garment specifications, features and benefits*

**Standard Garment**

**CONTI JACKET STANDARD**

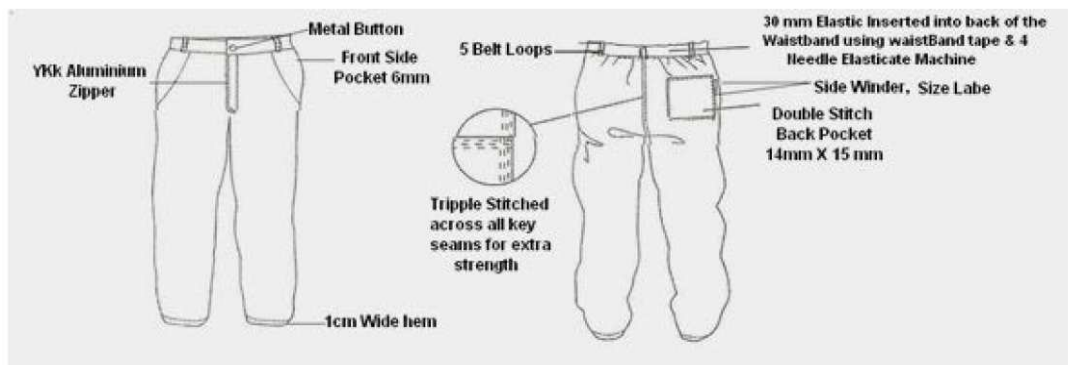


Front panels and yokes edges are surged (Over lock)

All pocket ends, sleeve ends, zipper, collar and lapel of the yokes are securely bar tacked.

All seams are safety stitched

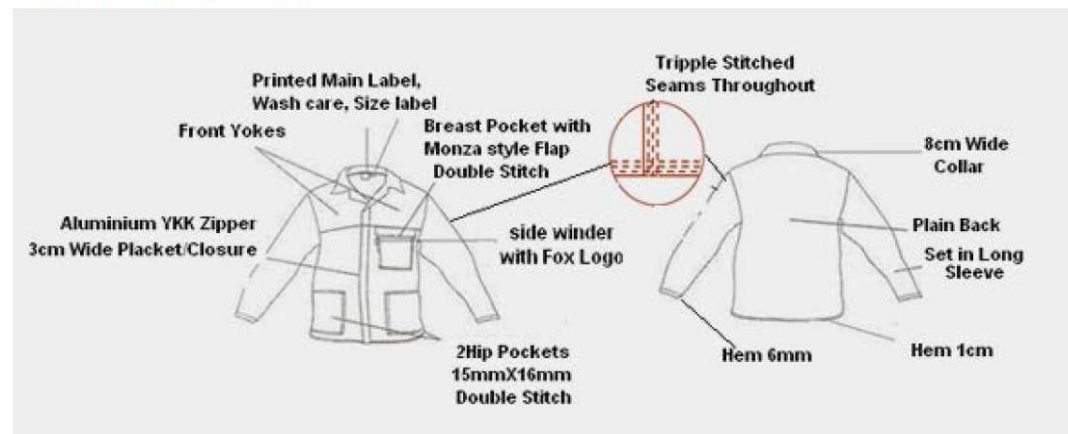
**CONTI TROUSER STANDARD**



All seams are safety stitch except back seam triple stitch

All pressure areas such as pocket edged, fly, croch and belt loops are securely bar tacked

**CONTI JACKET TRIPLE STITCH**

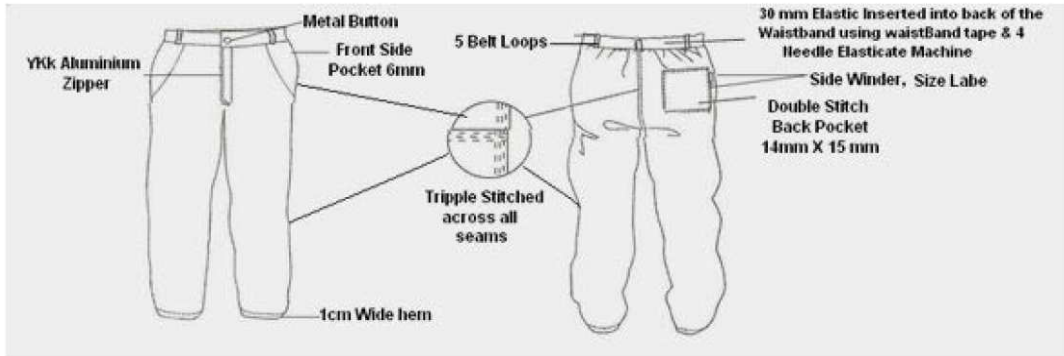


All seams are triple stitched

Front panels and yokes edges are surged (Over lock)

All pocket ends, sleeve ends, zipper, collar and lapel of the yokes are securely bar tacked.

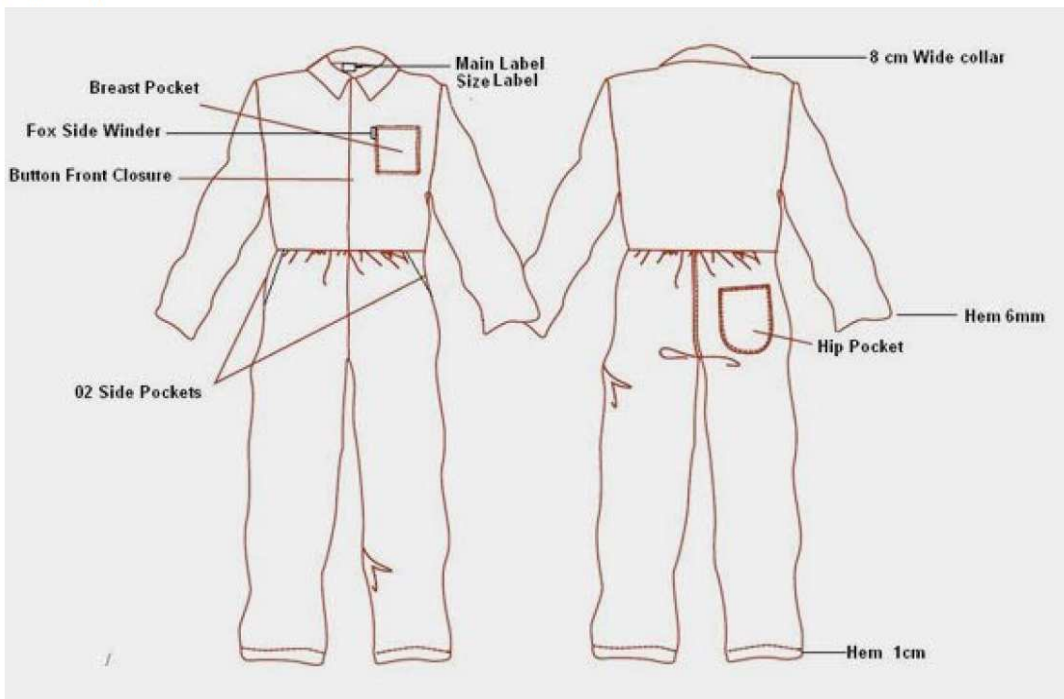
**CONTI TROUSER TRIPPLE STITCH**



All seams are triple stitch

All pressure areas such as pocket edged, fly, croch and belt loops are securely bar tacked

**Boiler Suit**



All pocket ends, collar, sleeve ends, croch are securely bar tacked

Back seams, shoulder waist are double stitched

All other seams are safety overlock

TKT 80' Spun polyester thread is used for sewing